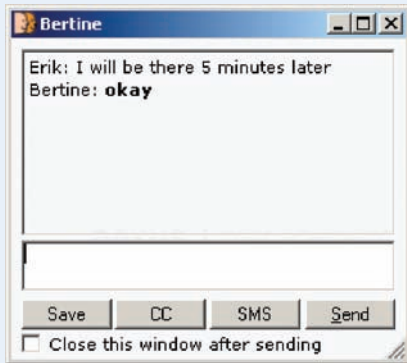


Secure Instant Messaging



post-@ Communicator

A pure Presence & Enterprise IM system, Post-@ Communicator indicates who is present in your organisation, where they are and how they can be reached (on PC or phone).

Why post-@ Communicator?

■ In control of communication

Post-@ Communicator is a closed IM system (with a proprietary server for your organisation). It is up to you to determine who has access and what contacts are available. Private abuse is impossible. All messages are encrypted and stored for reasons of compliance and security.

■ Ease of use

Post-@ has the easiest thinkable user interface: it's automatic. After starting the PC nothing needs to be done. Everyone has their contacts and groups readily available. Click to send a message, an SMS or make a phone call.

■ Security

Home workers, mobile workers and external colleagues are connected just as easily, even without VPN. Secure login and encryption guarantee the safety of your data and network. No unsolicited messages, abuse or viruses, as on MSN or other public IM services.

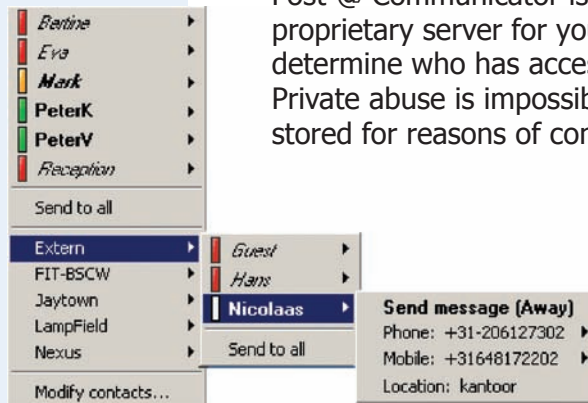
■ Reliability

Post-@ provides communication when you really need it. When your email server, database server or Active Directory would fail: Post-@ IM is still available. Post-@ is ready to integrate with telephone systems and other applications. But it also makes a perfect stand alone system.

■ Tailoring

Solutions by Jaytown are flexible. Integrations, extensions or tailored niche applications are relatively easy to develop. Post-@ technology has a modular architecture, based on accepted integration standards such as XML.

**Improves
Availability,
Communication,
Efficiency and
Collaboration.**



- Presence
- Location
- Availability on PC
- Availability on the phone
- Instant Messaging
- SMS
- Active Directory

Platforms

Server: Win 2000 Server, 2003 Server

Client: 2000, XP; ME, Citrix.

Mobile: Pocket-PC, Blackberry



NEW: Integrates with BSCW Team Collaboration (www.bscw.de)